

## Directions to Rattlesnake Mountain Range

### From U.S. 69 north of Checotah

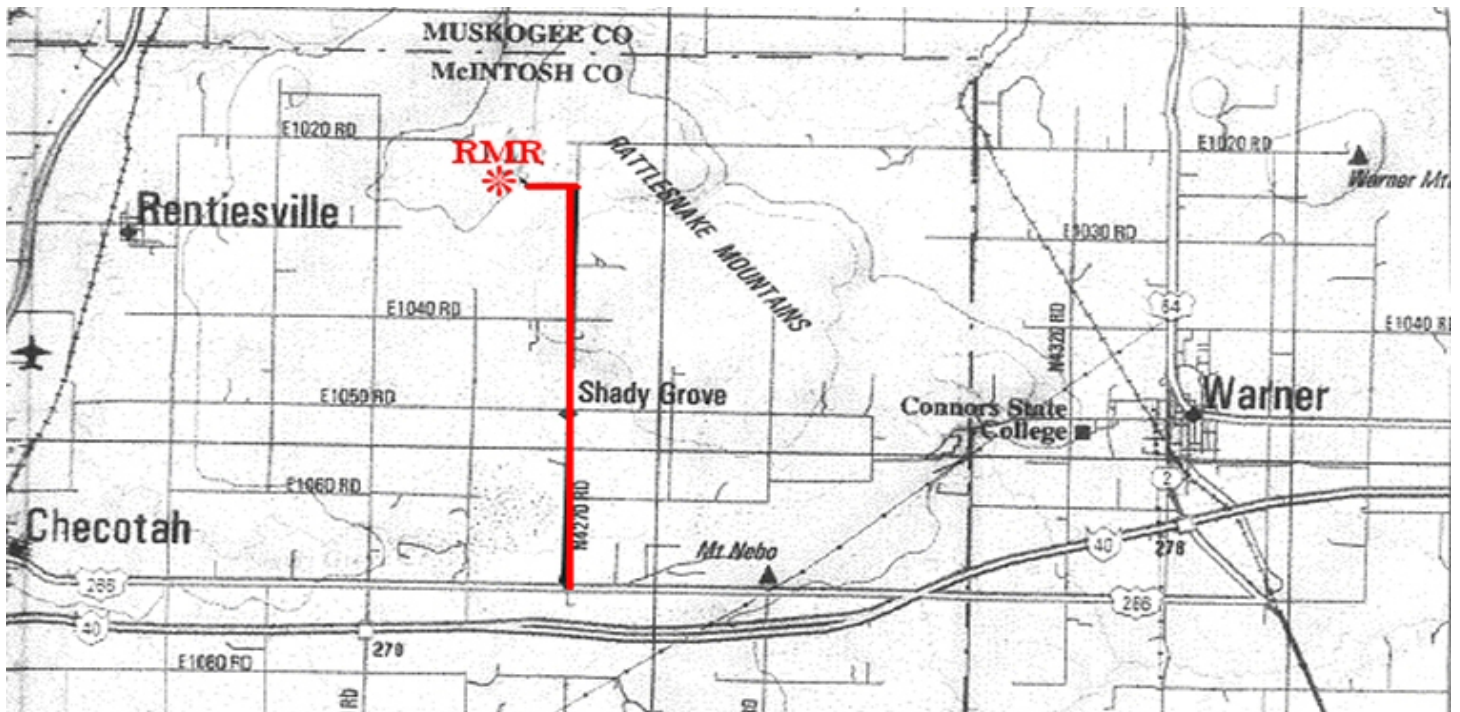
Take the first exit to Checotah just past a water tower on the Right side of the road. Left at stop sign toward Checotah. Go to the signal light intersection, turn Left onto Hwy. 266. Proceed about 6 miles to Shady Grove Road. Turn Left onto Shady Grove Road. Go 4.5 miles north on Shady Grove Road, turn Left and proceed ½ mile to the entry gate.

### From US 69 south of Checotah (Also coming from the West on I 40)

Get on I 40 east. Go to exit 270 (Texanna Rd) Turn Left on Texanna Rd and go to the stop sign. Turn Right on to Hwy. 266 and go 2 miles, turn Left onto Shady Grove Road. Go 4.5 miles north on Shady Grove Road turn Left and go ½ mile to entry gate.

### From the east on I 40

Stay on I 40 going past Warner to Exit 270 (Texanna Rd) exit I 40 at this point and go onto Texanna Road to the Right. Go to the Stop sign and turn Right. Proceed 2 miles to Shady Grove Road, turn Left onto Shady Grove Road and stay on that road for 4.5 miles. Turn Left and go ½ mile to the entry gate.



Signs will be put out the morning of the shoot to help you spot Shady Grove Road and the final turn into the club grounds.